

# JP2pro high-end recorder evolves. Higher shock-resistance, smaller size, lighter-weight and lower power consumption by SSD.

## LOSSLESS & VBR TECHNOLOGY

Reversible LOSSLESS compression mode of the JPEG2000 enables longer recording time while keeping the uncompressed picture quality.

The **JP2pro** can handle the VBR (Variable Bit Rate) data, while the other recorders only handle CBR (Constant Bit Rate) data. This is why the **JP2pro** achieves very high picture quality including the LOSSLESS with long recording time.

## SELECTABLE QUALITY & RECORDING TIME

You can select four types of picture quality modes and SSD magazines with different capacity, to find out the best combination for your needs

### Picture Quality modes

- ◆ LOSSLES---Uncompressed quality
- ◆ HQ---Visually lossless (HDCAM-SR class)
- ◆ LP1---Long-play 1 (HD-D5 class)
- ◆ LP2---Log-play 2 (HDCAM class)

### SSD MAGAZINE Capacity / Recording time

QUALITY MODE	SSD MAGAZINE CAPACITY AVERAGE RECORDING TIME			
	192GB	384GB	768GB	1536GB
LOSSLESS	0.7 H	1.4 H	2.8 H	5.6 H
HQ	2.2 H	4.4 H	8.8 H	17.6 H
LP1	2.8 H	5.6 H	11.2 H	22.4 H
LP2	5 H	10 H	20 H	40 H

(NOTE) The recording time in the table is measured with relatively busy HDTV moving picture sequence (1080i/59.94 10-bit). Actual recording time is varies depending on the bit depth, HDTV standard and the picture complexity.

## SIMULTANEOUS RECORD/PLAY

You can freely access the recorded part without disturbing the continuous recording. This feature is useful for the high quality security system, the sports programs (e.g. slow motion) and the time shift playback operation.

## SYNCHRONOUS OPERATION

Full synchronous record/play operation of two or more **JP2pro** recorders achieves the recording of higher resolution images such as 3D, 4:4:4, 1080p/60 or 50, 4K or more. The reversible LOSSLESS compression enables the recording of very special signal format that cannot be compressed.

### Dual-link operation system



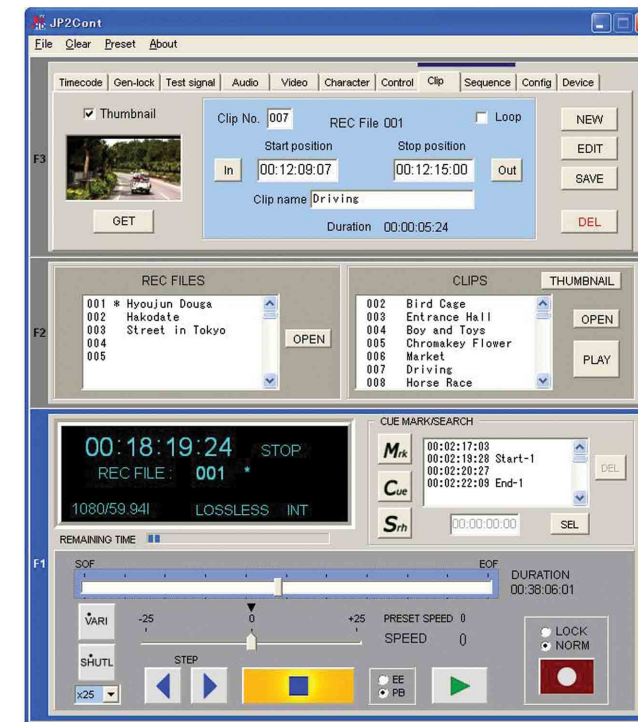
## EASY EXCHANGE SSD MAGAZINE

**JP2pro\_rev.S** employs easy replaceable SSD magazine. The flash memory base recording media has many advantages such as very low power consumption, light weight, shock proof, higher altitude and wider temperature range.

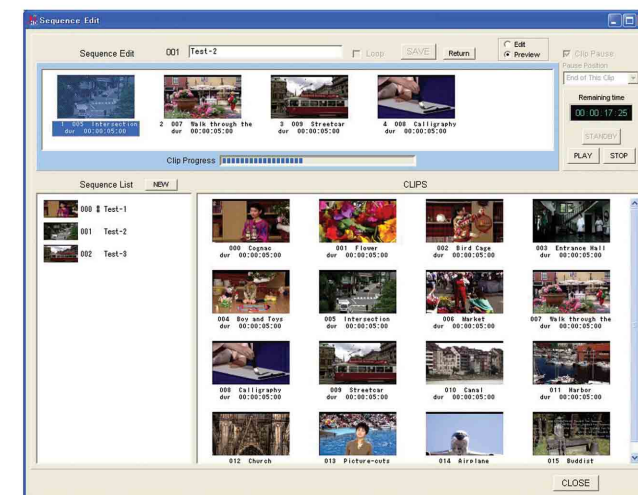


## EASY CONTROL FROM PC

**JP2pro** can be controlled via the Ethernet. The dedicated GUI control software is prepared for easy control of all the functions of the recorder, and sophisticated CLIP and SEQUENCE management. The thumbnail pictures can be extracted directly from JPEG2000 recorded file, and transfer to the PC through Ethernet cables. So no additional converter box or cabling is needed.



GUI Main dialog



SEQUENCE Edit / Preview dialog

## APPLICATIONS

- **Uncompressed picture quality**
  - ◆ Events and convention using large screen.
  - ◆ Reference picture for research and manufacturing.
  - ◆ Promotion picture source for LCD and Plasma TVs.
  - ◆ Surveillance recording for military and defense.
  - ◆ High quality long recording time for D-Cinema.
  - ◆ Arial cinematography.
  - ◆ High quality recording for science and medical.
- **Long recording time**
  - ◆ High quality security system.
  - ◆ Field production of drama and natural program.
  - ◆ Long sports program like golf, soccer, etc.
  - ◆ Long hour shooting from airplane, ships and cars.
  - ◆ Records of public races.
- **Fully synchronous operation**
  - ◆ Production and playback of the 3D HDTV, 4K or more.
  - ◆ Specially arranged large screens for amusements.
  - ◆ Production and playback of the 1080/50P, 60P and 4:4:4 (:4)
  - ◆ 2K/XYZ 12-bit for D-CINEMA.
- **Other purpose**
  - ◆ HDTV time shift on-air.
  - ◆ Interval recording for natural programs and CM.
  - ◆ Slow motion and highlight editing for sports program.

## OPTIONS

You can configure the most suitable cost effective recorder by selecting needed options.

- ◆ Selection of the SSD cartridge
- ◆ Selection of the control method
- ◆ Selection of the special functions
- ◆ Addition of the in/out interfaces

Please ask the JP2pro distributors or sales persons. We will propose the best configuration for your purpose.